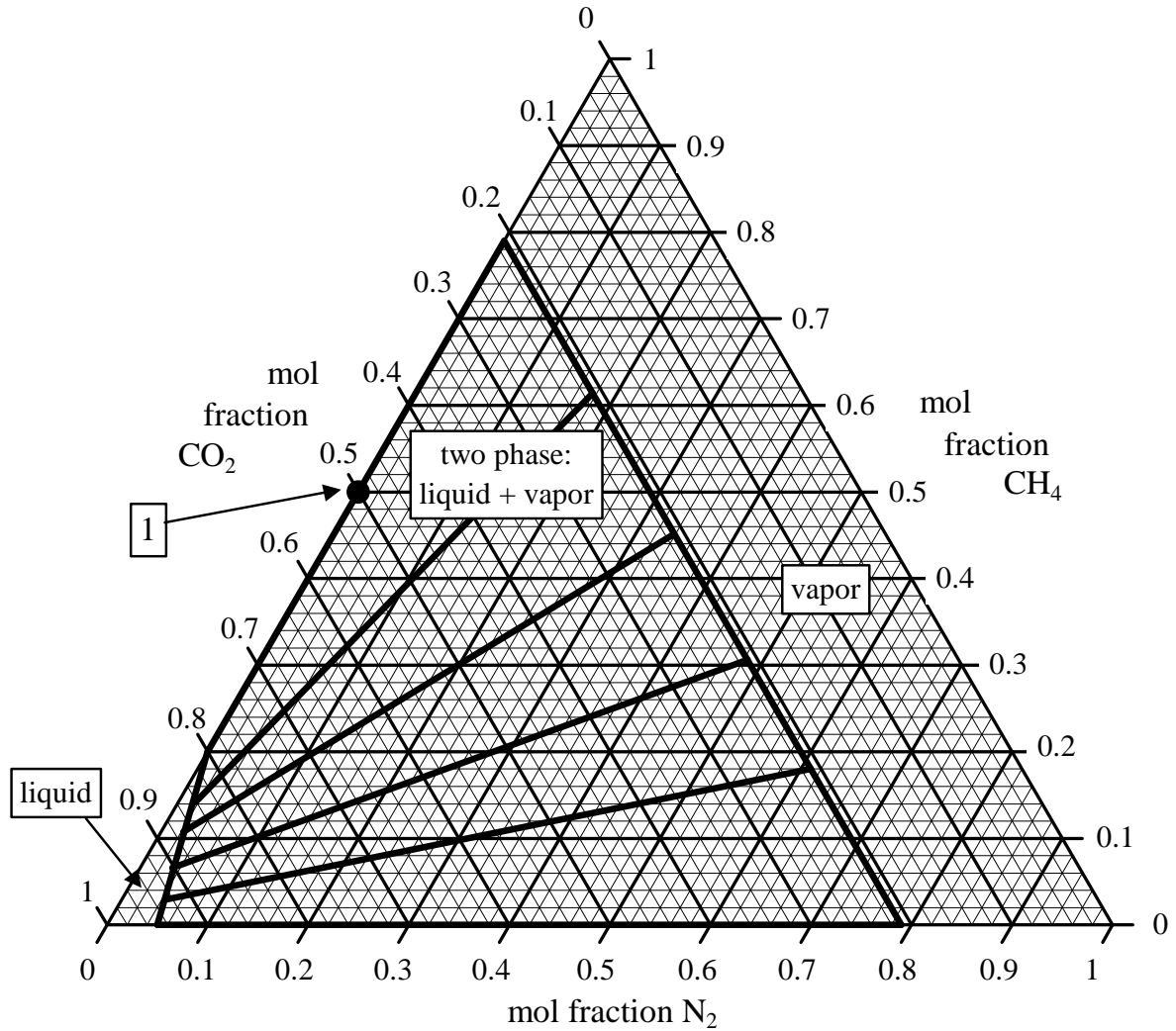


4.99 ternary phase diagram for carbon dioxide + methane + nitrogen at 40 atm and 220 K.

ternary diagram for CO<sub>2</sub> + CH<sub>4</sub> + N<sub>2</sub> mixtures at 40 atm and 220 K.



from *Chemical Engineering Design and Analysis: An Introduction*  
T. M. Duncan and J. A. Reimer, Cambridge University Press, 2<sup>nd</sup> ed., 2019.

©Cambridge University Press.